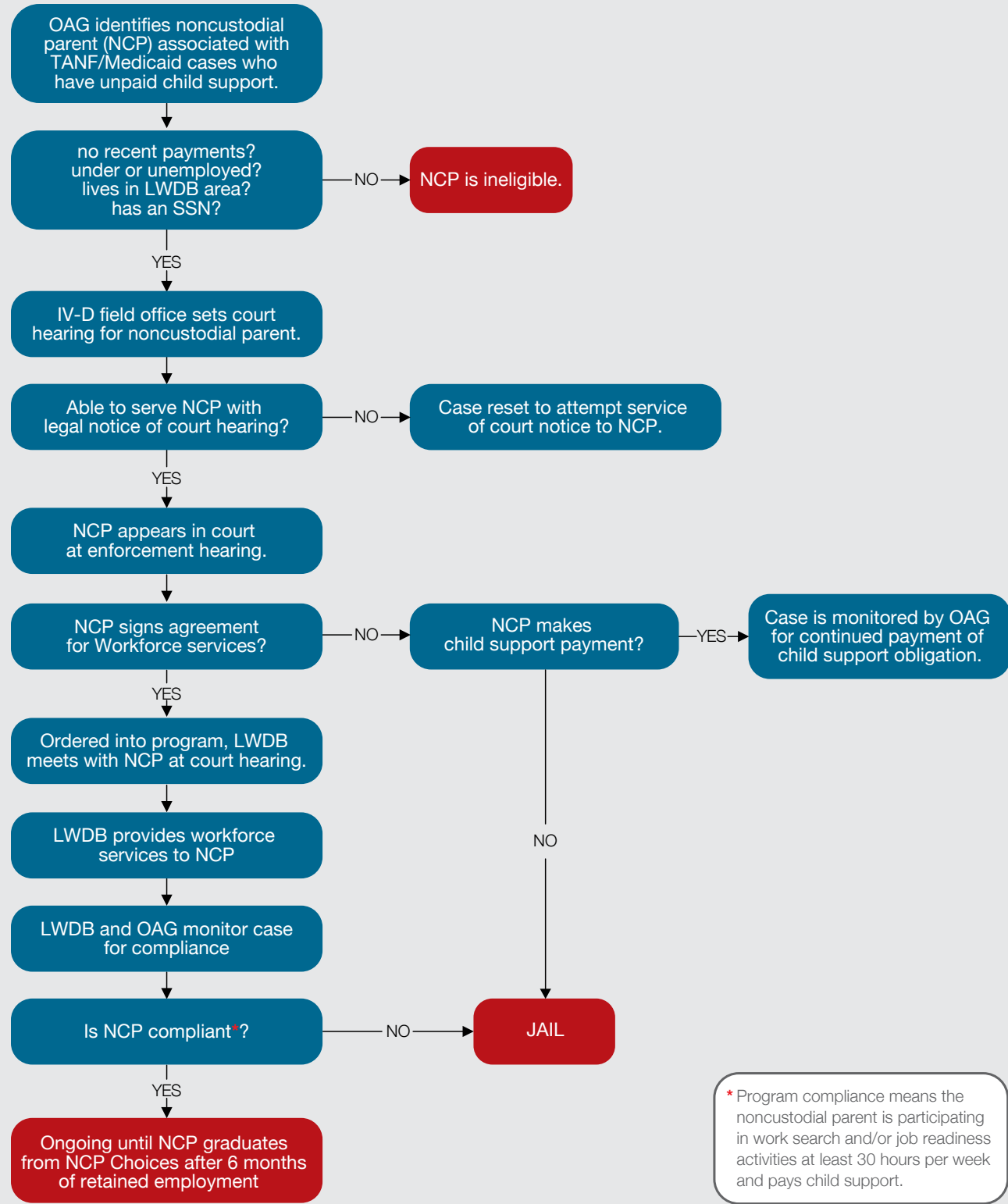


NCP CHOICES FLOWCHART



* Program compliance means the noncustodial parent is participating in work search and/or job readiness activities at least 30 hours per week and pays child support.

NCP CHOICES:

{ Finding Work and Staying Employed }




ATTORNEY GENERAL OF TEXAS
GREG ABBOTT
 CHILD SUPPORT DIVISION
 FAMILY INITIATIVES

The Office of the Attorney General (OAG) and Texas Workforce Commission (TWC) lead a model, multi-site employment and child support enforcement program to help unemployed noncustodial parents (NCPs) find work and financially support their children. In 2005, NCP Choices began as a pilot project in five, largely urban sites. The success of the program led to expansion, and as of October 2010, the program operates in 17 workforce board areas that serve parents from 44 child support offices. Evaluation of the program by the Ray Marshall Center at the University of Texas found it to be one of the most successful large-scale NCP employment efforts in the nation to date.

The NCP Choices Program links strong court-ordered compliance monitoring to assistance with job search efforts, backed by swift and certain sanctions for those who fail to comply with program requirements. By leveraging the resources of the OAG, TWC and Title IV-D Child Support associate judges, the program has proven to be cost effective for parents who have fallen behind on their child support. More than \$3 in child support is collected for every \$1 spent on the program.

The impact on families receiving child support, especially families living at the lower end of the economic spectrum, is great. Poor families rely heavily on child support to make ends meet.

- Among custodial mothers below the poverty level who received any payments, the average child support received represented almost half of their average income (U.S. Census).
- NCP Choices has a ripple effect. Families who receive child support are less likely to rely on TANF, working parents are less likely to file unemployment claims, and their children are more likely to be covered by medical insurance.
- NCP Choices diverts non-compliant obligors from jail and directs them into productive employment activities.
- Helping NCP Choices participants find work benefits multiple families. The average participant has 1.8 child support cases – the 7,500 current participants represent 13,500 families.

NCP Choices is available to approximately 69 percent of the eligible child support caseload statewide. Beyond the impact on financial stability, however, consistency in child support yields a positive impact on father-child and mother-father relationships.

‘Jorge’ – NCP Choices participant

“My relationship with my kids has been much better. Now I know they have insurance and I know they are safe.”

‘Mary’ – custodial parent on NCP Choices impact

“He’s excited about helping with [his daughter], and so it’s pretty good because we communicate about something else, something besides him not paying.”

NCP CHOICES FAQs

What makes NCP Choices successful?

Previous NCP employment programs did not have the strong tie between child support enforcement, workforce development, and the courts – relying either on “the carrot” (services) or “the stick” (penalties). NCP Choices combines the two, providing employment help backed with accountability.

Why can’t all noncustodial parents with child support debt participate in NCP Choices?

Currently, the program is funded with statewide TANF employment dollars and program participation is limited by the funding source.

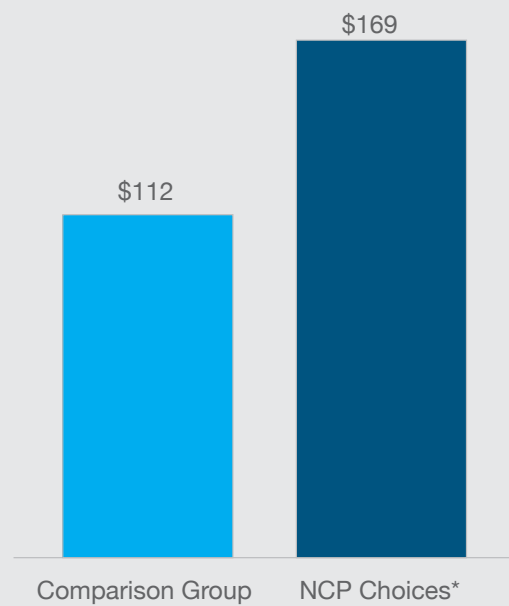
What if an NCP wants to voluntarily participate in NCP Choices?

In order to be eligible for NCP Choices, an NCP must be facing possible jail time for non-payment of child support. A parent in need of employment services can voluntarily access universal workforce services through his/her local workforce center.

Where is NCP Choices currently operating? How many counties are covered?

Seventeen workforce development boards provide services to NCPs from 44 child support offices and 26 child support courts in more than 100 counties.

IMPACT ON MONTHLY CHILD SUPPORT PAYMENTS



*Prior to program entry, NCPs paid \$0 in eight months.

FACTS AT A GLANCE

NCP Choices Participants

- 7,500 NCPs
- Approximately 13,500 families impacted
- \$25 million collected from participants
- 70% find work within 8 weeks
- 63% stay employed for at least 6 months

Year one results relative to comparison group

- NCPs paid child support 50% more often
- 44% increase in total collections
- Custodial parents are 21% less likely to receive TANF benefits

NCP CHOICES SITES & CORRESPONDING WORKFORCE BOARD SERVICE AREAS

